

Beach Monitoring Guidelines—Summary

For use when conducting a beach survey with NSW TurtleWatch, monitoring beaches in NSW for signs of nesting sea turtles.

Call 0468 489 259 to report sea turtle tracks

WHEN TO WALK

Nesting can occur from **November** until **March**.

Close to **SUNRISE** is the best time to walk to find tracks as they will be less disturbed.



WHERE TO WALK

Walk along the **Hightide Line**, looking both directions.

Walk your **LOCAL BEACH**, anywhere along the NSW coast.



REPORTING

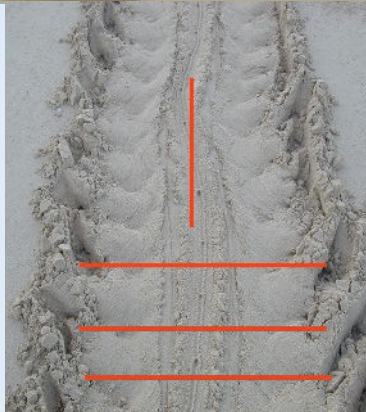
Beach surveys where **no tracks** are seen are just as important! Beach surveys can be reported through the **SURVEY123** App.



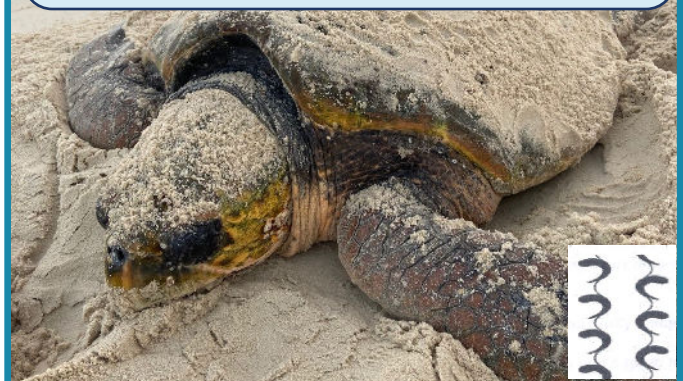
Green Turtle (*Chelonia mydas*)



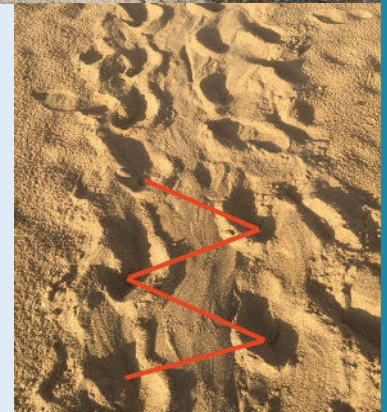
- Opposite flipper marks.
- Tail drag in the centre.
- Tracks 1.2-1.5m wide.
- Smooth plastron drag.



Loggerhead Turtle (*Caretta caretta*)



- Alternating flipper marks.
- No tail drag.
- Tracks 1-1.2m wide.
- Tracks appear 'swirly'.



NSW TurtleWatch is a citizen science based sea turtle nest monitoring project developed by Australian Seabird & Turtle Rescue and proudly funded by the NSW Government.

